

## FMS-winderGLIDE Type D.3

---

**Stepper Motor Actuator for guiding  
of a stand**

**High accuracy positioning**

---

**650 N Thrust force**

**High Power in a compact design**

---

**125 mm and 200 mm steering offset**

**Two sizes for greater positioning flexibility**

---

**Multiple mounting options, durable housing**

**Flexible, heavy duty design**

---



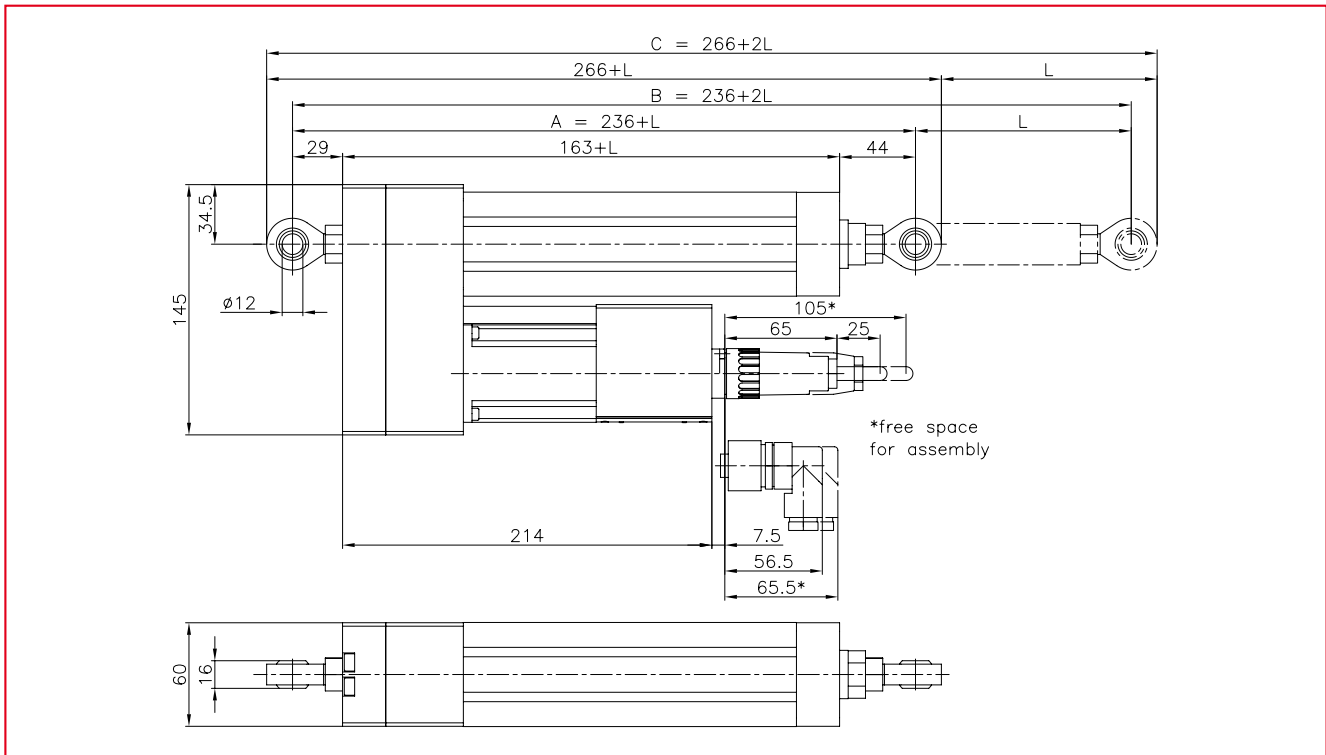
### ● Functional Description

The FMS-winderGLIDE D.3 is an actuator designed for guiding unwind and rewind stands.

The stepper motor equipped drive is powerful and accurate. When compared to hydraulic systems, this actuator operates clean and is suitable for the food and pharmaceutical packaging industry.

The FMS-winderGLIDE D.3 uses an accurate spindle and ball screw combination that is very precise in its operation. The easily accessible single connector, multiple mounting options, and space-saving design make the FMS-actuator perfect for new machine designs or upgrading existing installations.

**FMS-winderGLIDE Type D.3 • Dimensions in mm**



**FMS-winderGLIDE Type D.3 • Dimensions in mm**

Steering offset L	125 or 200
Distance A in center position of rod end	236 + L
Length B at full travel position	236 + 2L
Total length C	266 + 2L

**Order code (example):**



**FMS-winderGLIDE Type D.3 • Technical Specification**

Spindle pitch	5
Thrust force	650 N
Adjusting speed	25 mm /s
Drive	16 mm spindle, ball screw combination
Temperature range	-10...60 °C
Protection class	IP 40

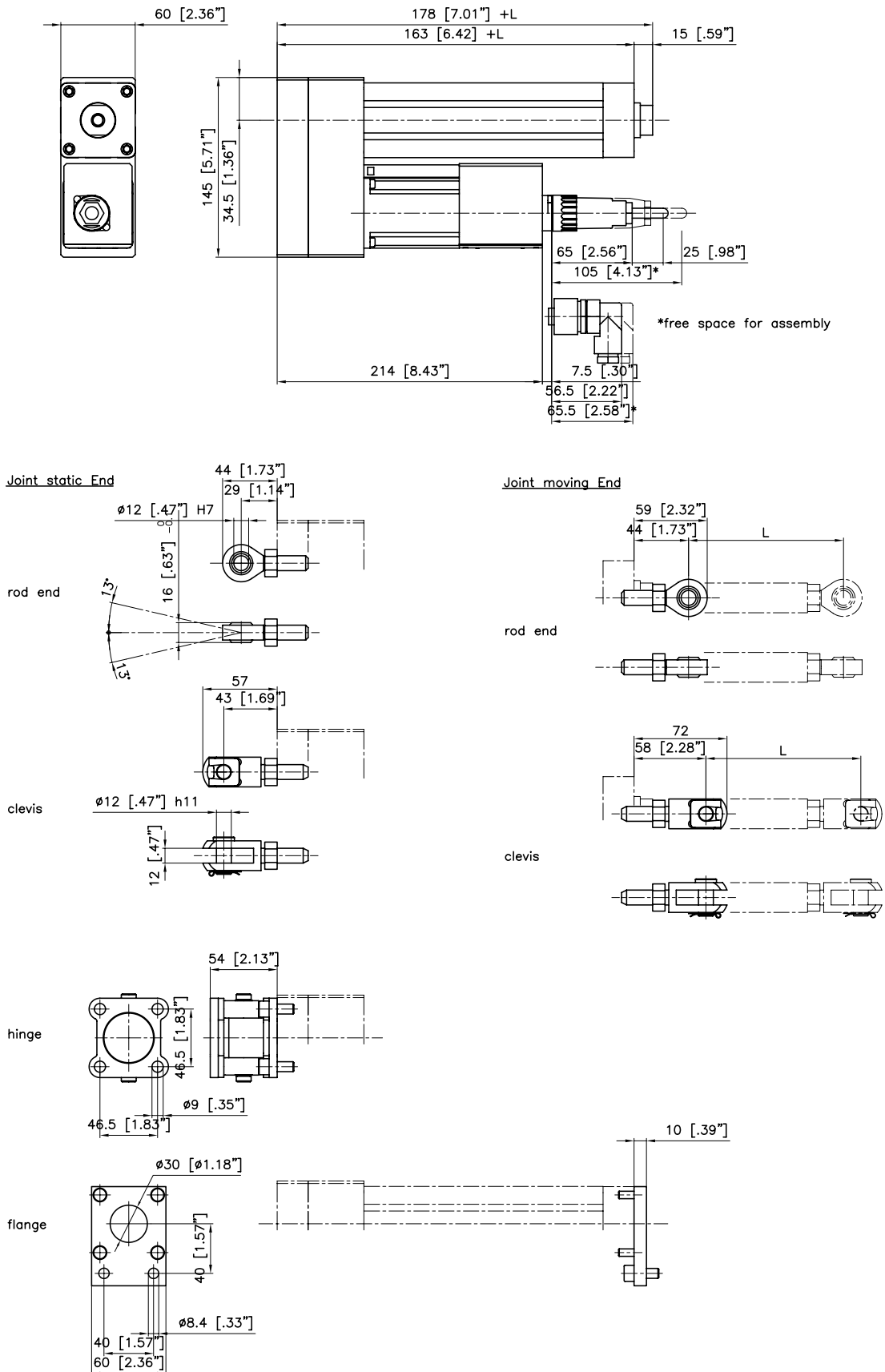
**Scope of delivery:**

**Actuator with spherical rod ends on both sides.**

Not included in the scope of delivery are the preassembled cable and alternative mounting devices. Following mounting devices can be ordered separately:

- Clevis
- Hinge
- Flange for front mounting

FMS-winderGLIDE Type D.3 • Mounting Devices



A wide range of web guiding controllers and sensors are available to work in conjunction with the BKS.D.3 actuator. Thanks to the large choice of system components the actuator can be utilised very flexibly.

**FMS web guiding • Sensors**

**Ultrasonic edge sensors**



**Optical edge sensors**



**Optical line sensors**



**Manual and motorized sensor adjustment**



FMS web guide sensors are available in different styles **to detect the position of any type of web material.** They are available in several sizes **to accommodate a wide range of correction requirements.**

FMS web guide sensors are offered with a basic manual adjustment or an automatic motorized traversing adjustment driven by the web guide controller.

**FMS web guiding • Web guide controllers**

**309 Series**



**600 Series**



FMS web guide controllers are offered in several styles including **single and multi-channel** versions for controlling multiple web guides. They are specifically designed for the industry's increasing control requirements, faster machine speeds, and demand for **ease of installation and operation.**

FMS web guide controllers utilize high end microprocessors and provide **high flexibility** to control AC, or stepper motors as well as hydraulic valves.

FMS web guide controllers are offered with **several different integrated interfaces** including RS232, PROFIBUS®, Ethernet, CanOpen, etc.

**World Headquarters:**

**FMS Force Measuring Systems AG**  
 Aspstrasse 6  
 8154 Oberglatt (Switzerland)  
 Phone + 41 44 852 80 80  
 Fax + 41 44 850 60 06  
 info@fms-technology.com

**FMS USA, Inc.**  
 2155 Stonington Avenue  
 Suite 119  
 Hoffman Estates, IL 60169  
 Phone + 1 847 519 4400  
 Fax + 1 847 519 4401  
 fmsusa@fms-technology.com

**FMS UK**  
 Highfield, Atch Lench Road  
 Church Lench  
 Evesham WR 11 4UG  
 Phone + 44 1386 871023  
 Fax + 44 1386 871021  
 fmsuk@fms-technology.com

**FMS Italy**  
 Via Baranzate 67  
 20026 Novate Milanese  
 Phone + 39 02 39487035  
 Fax + 39 02 39487035  
 fmsit@fms-technology.com